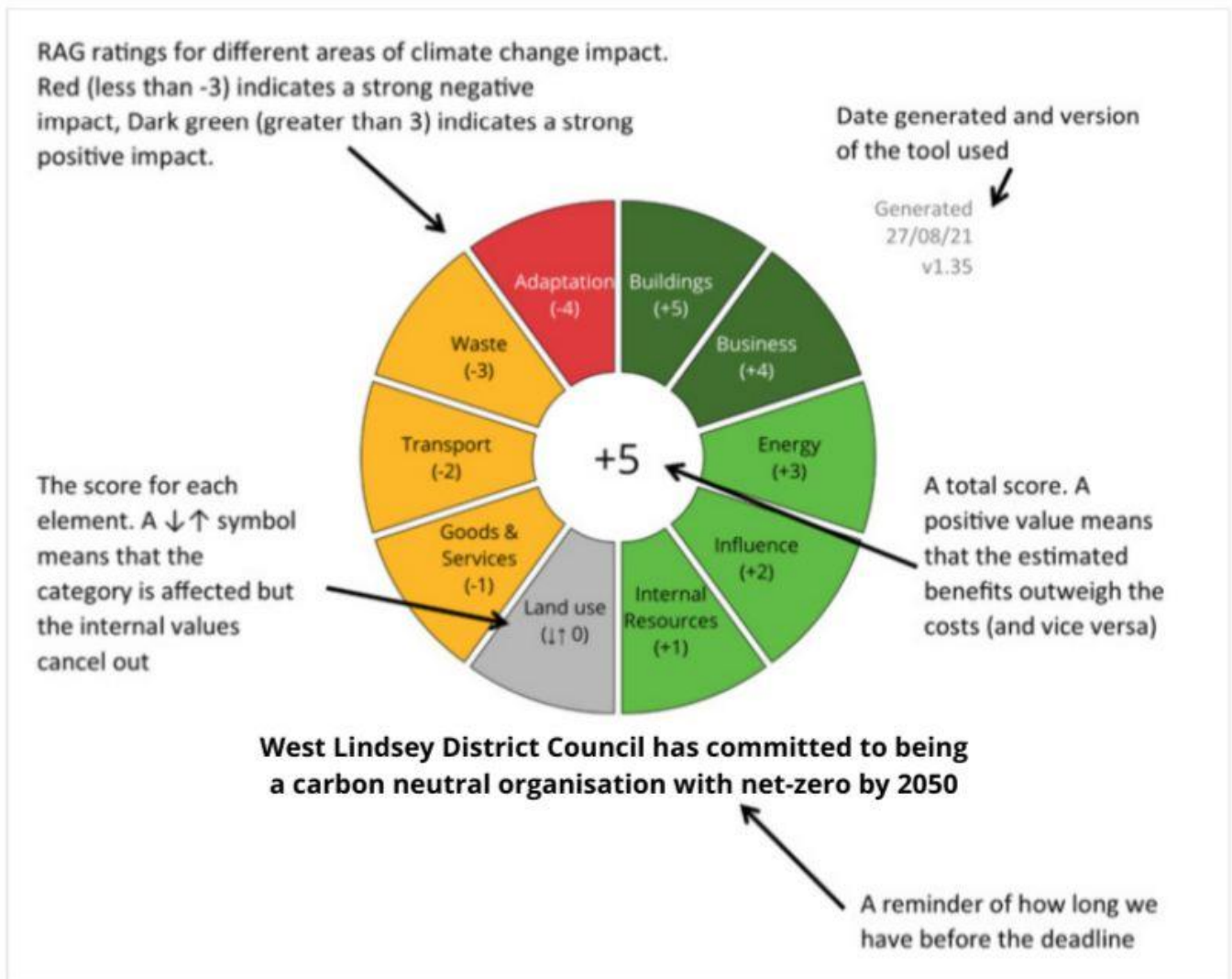


The Climate, Environment & Sustainability Impact Assessment indicator

The main output of a Climate, Environment and Sustainability Assessment (CESIA) is an infographic. This gives a modified RAG rating showing the estimated impact of a decision on different issues which influence climate change, environment and sustainability



These should be a simple guide to help you to direct your questions. There are a few things you need to know first though:

- These are based on select **Climate, Environment and Sustainability indicators only**. A project may have huge benefits in other areas, but if it has no climate change / environmental benefit, then it could still look bad here. It is then up to decision makers to decide whether these costs outweigh other benefits.
- They include costs and benefits to the whole district. That means that work outside geographical boundaries, or outside our organisation is still included
- You might see decisions with mostly grey areas. That's okay – it simply means that the decision doesn't have an impact on those things (or if there's a ↓↑ then there is an impact, but it cancels out).
- The "other" category disappears if it isn't used. If it is used, then you'll want to know what went in there.
- These are based on the **officer's assessment**. This means they don't necessarily compare with one another.
- The values in these graphics are not absolute, they are designed to give you a tool to identify the main climate costs and benefits quickly. There should be an accompanying paragraph explaining the results, and you may want to ask why the values are as they are.